

# CERTIFICATE OF LOCATION OF GOVERNMENT CORNER

South 1/4 Corner of Section 11 , Township 105 , Range 39 , 5th P.M.

STATE OF MINNESOTA, County of Murray

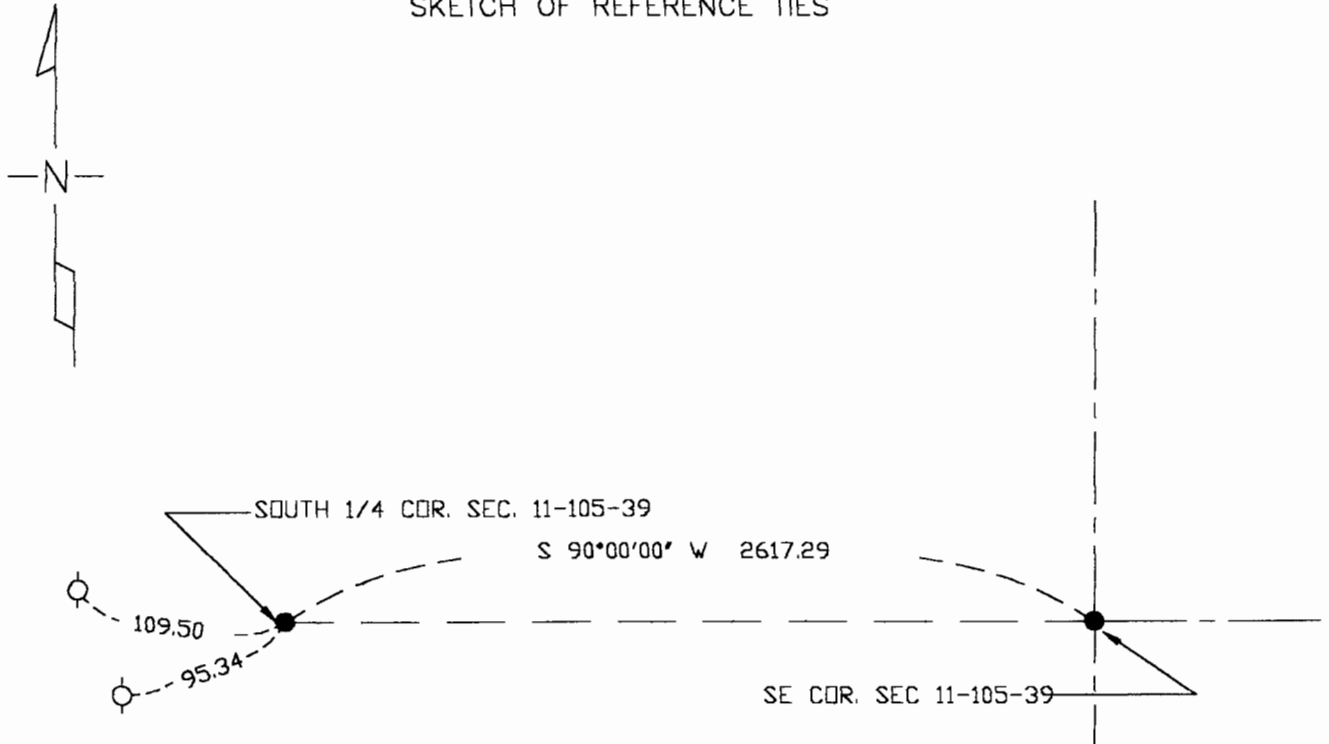
At the corner location shown on the sketch

On 10-25-99 found a 12" x 6" flat stone 4' deep 3' south of C in line with fence south.

left monument as found     lowered monument,     removed monument (explain)

On 10-25-99 placed a 5/8" Iron stake with survey cap 23008 over the top center of stone.

## SKETCH OF REFERENCE TIES



TIES:  
NAIL IN POWERPOLE-95.34' SW  
NAIL IN POWERPOLE-109.50' NW

Statement of evidence relative to this corner location is on back of page.

I hereby certify that this document and the data contained herein was prepared by me or under my direct supervision.

Perry L. Ziesbe    11/4/99  
SIGNATURE    DATE

MN. REGISTRATION NO. 23008

Land Surveyor,     Professional Engineer

County Surveyor,     County Engineer

### OFFICE OF THE COUNTY RECORDER

I hereby certify that this document was filed in the Co. Recorder's Office at \_\_\_\_\_ on the

\_\_\_\_\_ day of \_\_\_\_\_

County Recorder \_\_\_\_\_  
By \_\_\_\_\_, Deputy

DOCUMENT NO. \_\_\_\_\_